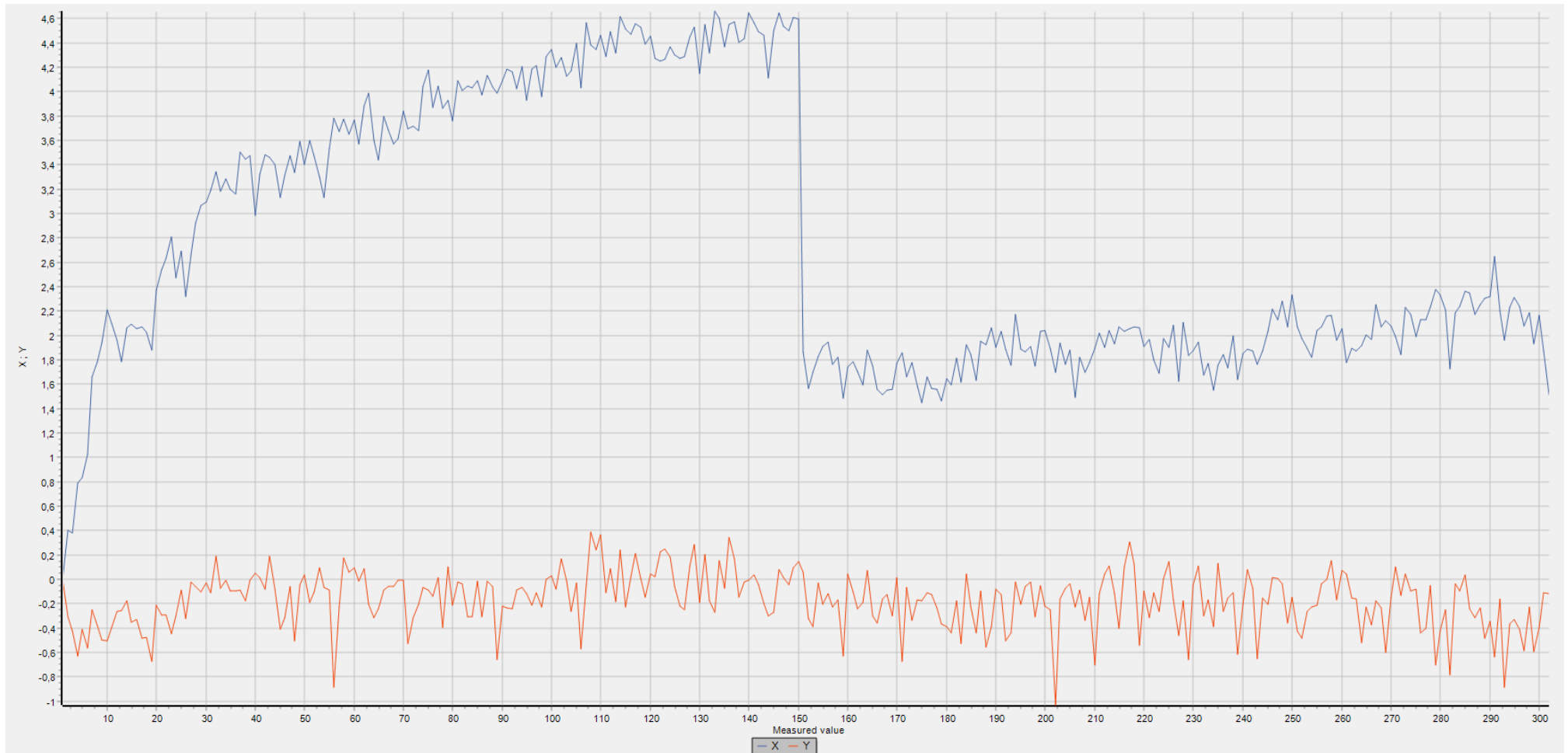


Fineplacer Training

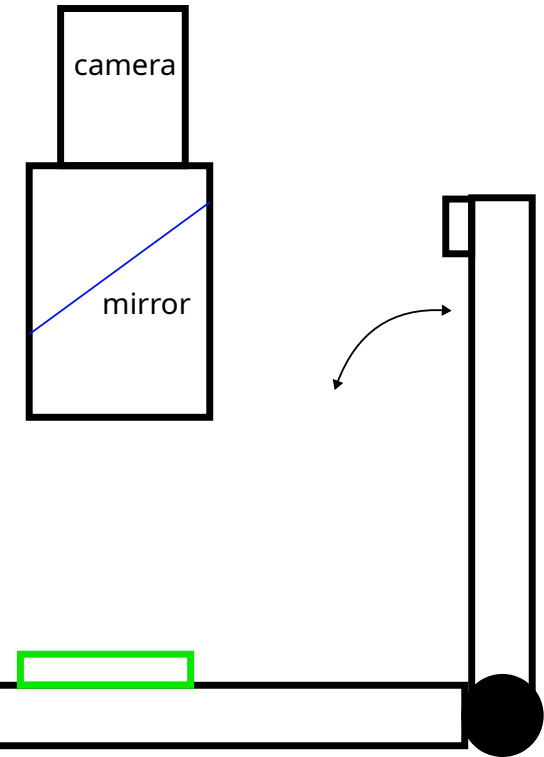
- Training 2 days
- Key takeaways
 - We can place with $<0.3\mu\text{m}$ @ 3 sigma (we measured it)
 - To keep this accuracy we need to calibrate regularly
 - Learned how to setup a program
 - One program needs $\sim 1/2$ -1 day on the machine
 - There is a way to use emended coordinate systems
 - Picture recognition is not the best, but we leaned what it likes
 - Did not test the heater, but easy to use (and I tested earlier that it works)
 - Handling tool was also tested (normal pick and place possible (or rough rotation))

Accuracy measurement



Things we do want (price pending)

- Win 11 update (remote access to the PC)
- Temperature compensation module
- Hight laser
- Toolchanger
- Gimbal tools (need some testing with our tools)
 - We will not get the same accuracy with stiff tools
- Dispenser



Need some tools at the machine, will put some permanent ones there

(ordered list)