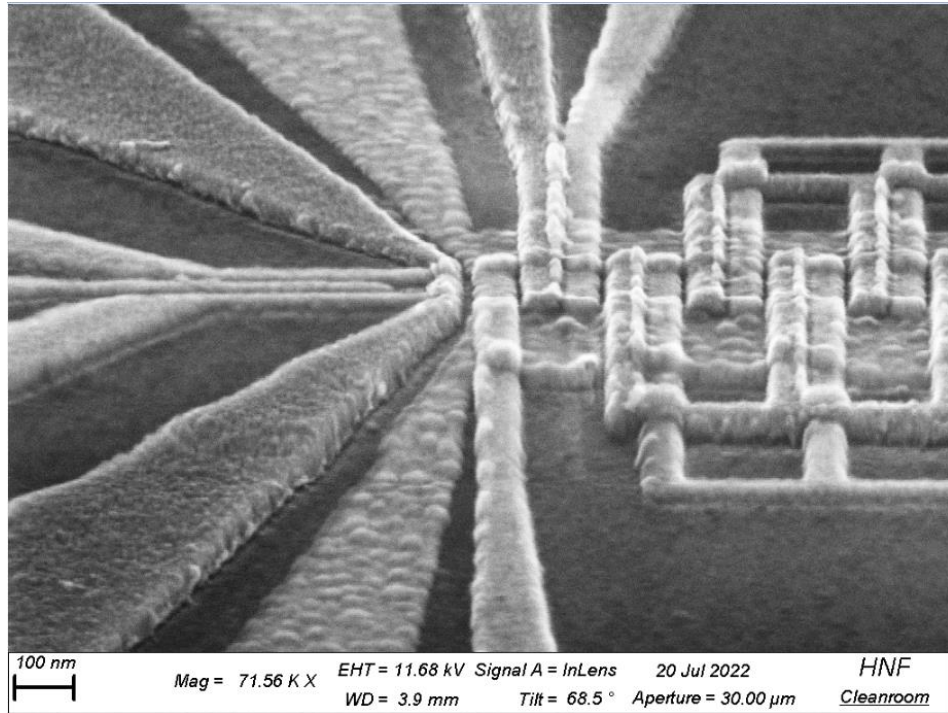




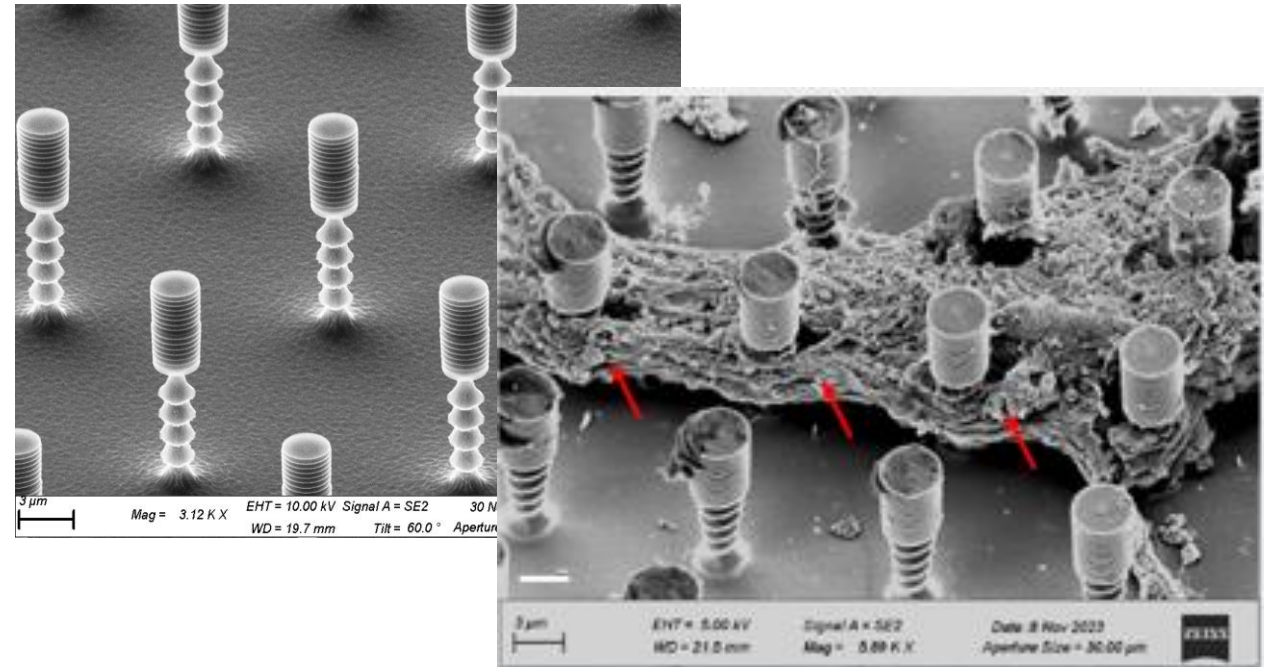
# HELMHOLTZ NANO FACILITY @ FORSCHUNGSZENTRUM JÜLICH

13.11.2025 | TERESA WEßELS

# EXAMPLES



Nature Communications, Volume 15, Article number: 2296 (2024)



unpublished

# HNF

## Helmholtz Nano Facility

- **Central cleanroom facility** of the Forschungszentrum Jülich
  - 21 institutes from FZJ
- External **cooperation** partners: RWTH Aachen, Universität zu Köln, HHU Düsseldorf and ARQUE u. a.
- Central cleanroom for **NEUROTEC research network** and **ML4Q cluster of excellence**
- Standard operation mode **user facility**, but also **technology development** and **service**
- Main **fields** quantum computing and bio electronics, but **widely spread**
- **Quality management** system certified according to ISO 9001

# NUMBERS



**1200 m<sup>2</sup>** cleanroom area



Classes **1-4** (constructed for)



**10,000** samples per year



**4** different fabrication lines



**60** different tools

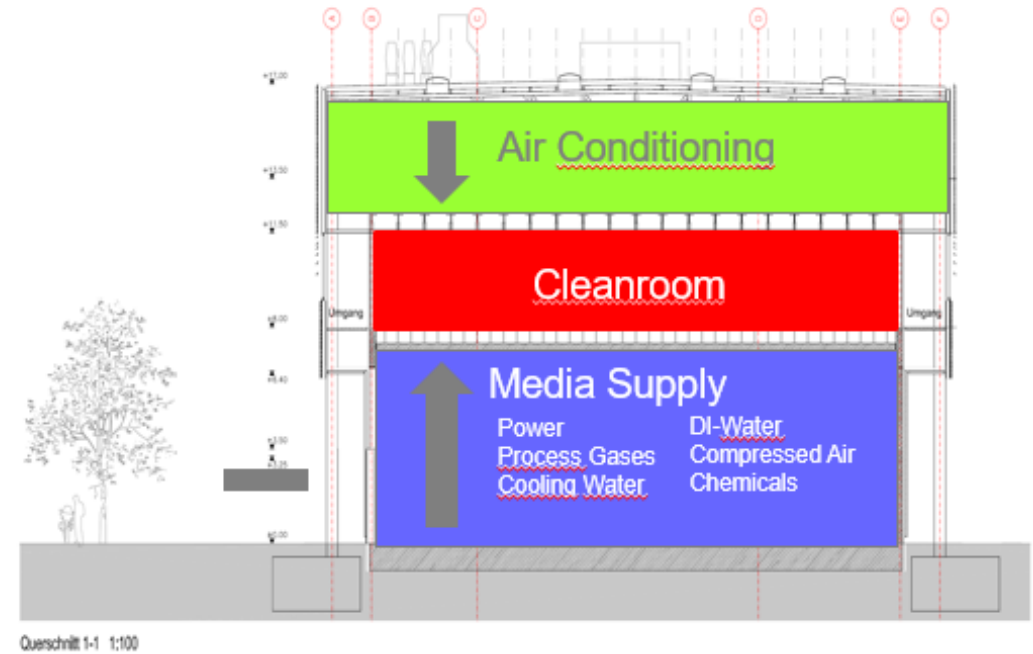


**5** new installations per year



**22°C** and **45%** humidity

# BUILDING

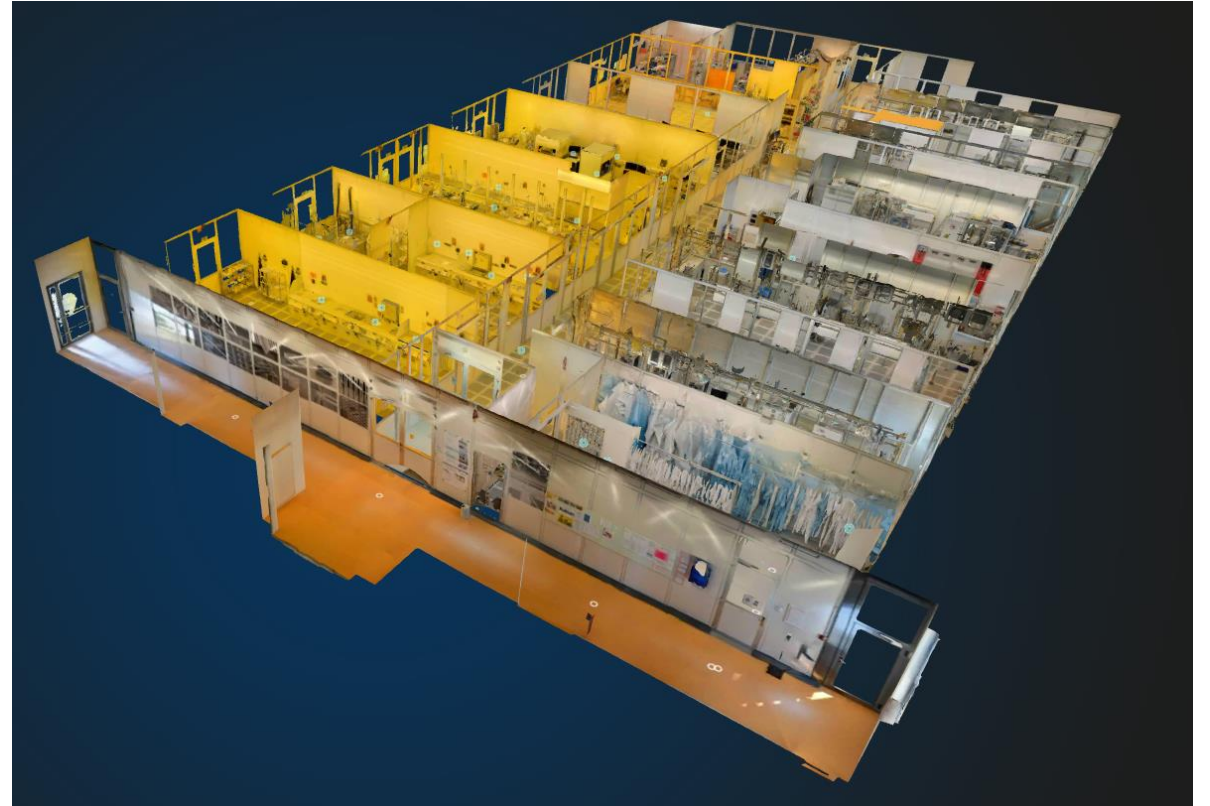




# WHAT DO WE OFFER?

## Capabilities

- Wetbenches
  - Lithography
  - Deposition
  - Dry etching
  - Analysis
- 
- Sample size from few mm up to 200 mm



# WHAT DO WE OFFER?

## Capabilities

- Wetbenches
  - Lithography
  - Deposition
  - Dry etching
  - Analysis
- 
- Sample size from few mm up to 200 mm



# WHAT DO WE OFFER?

## Capabilities

- Wetbenches
  - Lithography
  - Deposition
  - Dry etching
  - Analysis
- 
- Sample size from few mm up to 200 mm





# WHAT DO WE OFFER?

## Capabilities

- Wetbenches
  - Lithography
  - Deposition
  - Dry etching
  - Analysis
- 
- Sample size from few mm up to 200 mm



# WHAT DO WE OFFER?

## Capabilities

- Wetbenches
  - Lithography
  - Deposition
  - Dry etching
  - Analysis
- 
- Sample size from few mm up to 200 mm



# WHAT DO WE OFFER?

## Capabilities

- Wetbenches
  - Lithography
  - Deposition
  - Dry etching
  - Analysis
- 
- Sample size from few mm up to 200 mm

